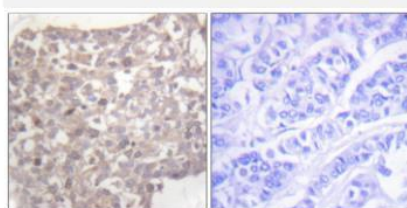


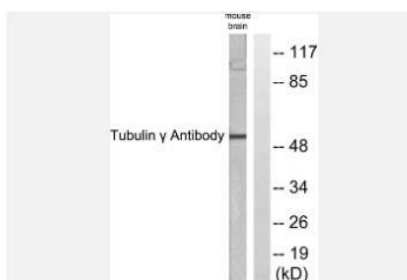
Tubulin γ pAb

Catalog No.	IDS0241
Reactivity	Human; Mouse; Rat
Applications	WB; IHC-p; IF(paraffin section); ELISA
Alternative Names	Tubulin gamma-1 chain; Gamma-1-tubulin; Gamma-tubulin complex component 1 (GCP-1); TUBG1
Formulation	Liquid in PBS containing 50% glycerol, 0.5% BSA and 0.07% sodium azide.
Source	Rabbit
Dilution	WB: 1:500-1:2000; IHC: 1:100-1:300; IF: 1:50-1:200; ELISA: 1:5000
Purification	The antibody was affinity-purified from rabbit antiserum by affinity-chromatography using epitope-specific immunogen.
Concentration	1 mg/ml
Storage&Stability	Store at 4 °C short term. Aliquot and store at -20 °C long term. Avoid freeze-thaw cycles.
Subcellular Location	-
MW	~ 50 KDa
Background	Tubulin is the major constituent of microtubules. The gamma chain is found at microtubule organizing centers (MTOC) such as the spindle poles or the centrosome. Pericentriolar matrix component that regulates alpha/beta chain minus-end nucleation, centrosome duplication and spindle formation.
Swiss-Prot	P23258

Products Images:



Immunohistochemistry analysis of paraffin-embedded human breast carcinoma tissue, using Tubulin gamma Antibody. The picture on the right is blocked with the synthesized peptide.



Western blot analysis of lysates from mouse brain, using Tubulin gamma Antibody. The lane on the right is blocked with the synthesized peptide.

