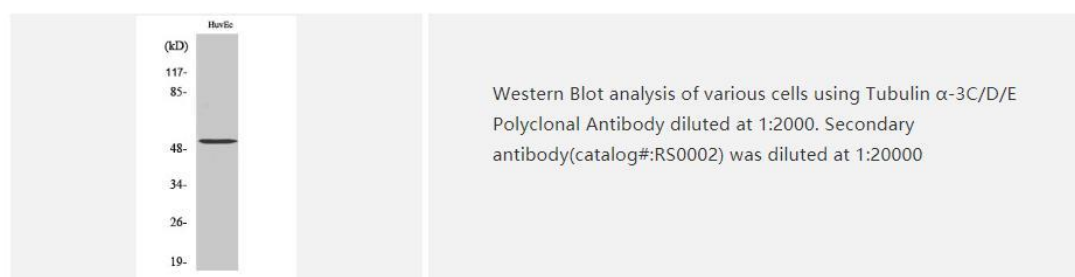
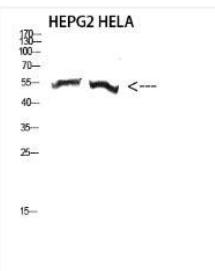


Tubulin α -3C/D/E pAb

Catalog No.	IDS0240
Reactivity	Human; Mouse; Rat
Applications	WB; ELISA
Alternative Names	Tubulin alpha-3E chain; Alpha-tubulin 3E; TUBA3E
Formulation	Liquid in PBS containing 50% glycerol, 0.5% BSA and 0.07% sodium azide.
Source	Rabbit
Dilution	WB: 1:500-1:2000; ELISA: 1:5000
Purification	The antibody was affinity-purified from rabbit antiserum by affinity-chromatography using epitope-specific immunogen.
Concentration	1 mg/ml
Storage&Stability	Store at 4 °C short term. Aliquot and store at -20 °C long term. Avoid freeze-thaw cycles.
Subcellular Location	-
MW	~ 55 KDa
Background	Tubulin alpha 3c(TUBA3C) Homo sapiens Microtubules of the eukaryotic cytoskeleton perform essential and diverse functions and are composed of a heterodimer of alpha and beta tubulin. The genes encoding these microtubule constituents are part of the tubulin superfamily, which is composed of six distinct families. Genes from the alpha, beta and gamma tubulin families are found in all eukaryotes. The alpha and beta tubulins represent the major components of microtubules, while gamma tubulin plays a critical role in the nucleation of microtubule assembly. There are multiple alpha and beta tubulin genes and they are highly conserved among and between species. This gene is an alpha tubulin gene that encodes a protein 99% identical to the mouse testis-specific Tuba3 and Tuba7 gene products. This gene is located in the 13q11 region, which is associated with the genetic diseases Clouston hidrotic ectodermal dysplasia and Kabuki syndrome. [provid]
Swiss-Prot	Q13748/Q6PEY2

Products Images:





Western Blot analysis of HEPG2 HELA cells using Antibody diluted at 2000. Secondary antibody(catalog#:RS0002) was diluted at 1:20000