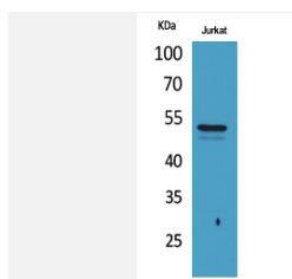


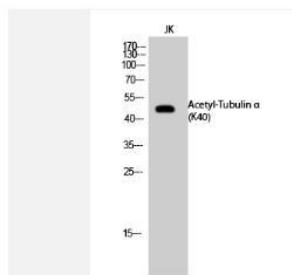
## Tubulin $\alpha$ (Acetyl Lys40) pAb

<b>Catalog No.</b>	IDS0233
<b>Reactivity</b>	Human; Mouse; Rat
<b>Applications</b>	WB; IHC-p; IF(paraffin section); ELISA
<b>Alternative Names</b>	Tubulin alpha-1A chain; Alpha-tubulin 3; Tubulin B-alpha-1; Tubulin alpha-3 chain; TUBA1A
<b>Formulation</b>	Liquid in PBS containing 50% glycerol, 0.5% BSA and 0.07% sodium azide.
<b>Source</b>	Rabbit
<b>Dilution</b>	WB: 1:500-1:2000; IHC-p: 1:100-1:300; IF:1:50-1:200; ELISA: 1:20000
<b>Purification</b>	The antibody was affinity-purified from rabbit antiserum by affinity-chromatography using epitope-specific immunogen.
<b>Concentration</b>	1 mg/ml
<b>Storage&amp;Stability</b>	Store at 4 °C short term. Aliquot and store at -20 °C long term. Avoid freeze-thaw cycles.
<b>Subcellular Location</b>	-
<b>MW</b>	~ 55 KDa
<b>Background</b>	Tubulin is the major constituent of microtubules, a cylinder consisting of laterally associated linear protofilaments composed of alpha- and beta-tubulin heterodimers. Microtubules grow by the addition of GTP-tubulin dimers to the microtubule end, where a stabilizing cap forms. Below the cap, tubulin dimers are in GDP-bound state, owing to GTPase activity of alpha-tubulin.
<b>Swiss-Prot</b>	Q71U36

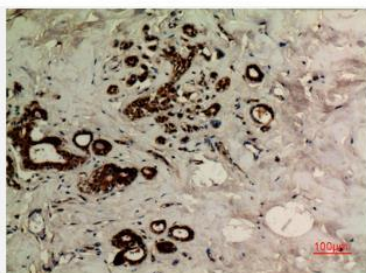
### Products Images:



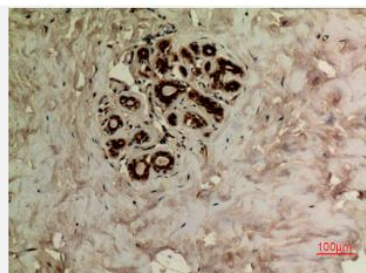
Western Blot analysis of Jurkat cells using Acetyl-Tubulin  $\alpha$  (K40) Polyclonal Antibody. Secondary antibody(catalog#:RS0002) was diluted at 1:20000



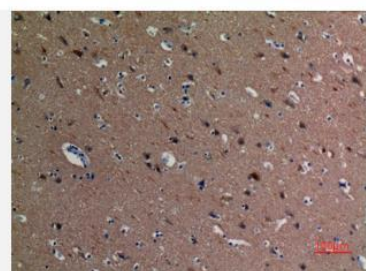
Western Blot analysis of JK cells using Acetyl-Tubulin  $\alpha$  (K40) Polyclonal Antibody. Secondary antibody(catalog#:RS0002) was diluted at 1:20000



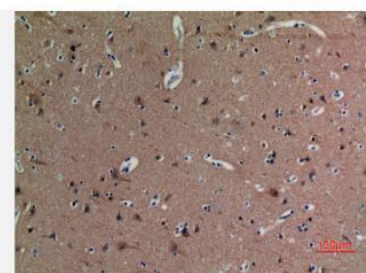
Immunohistochemical analysis of paraffin-embedded human-breast, antibody was diluted at 1:100



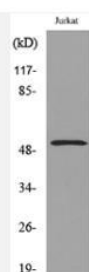
Immunohistochemical analysis of paraffin-embedded human-breast, antibody was diluted at 1:100



Immunohistochemical analysis of paraffin-embedded human-brain, antibody was diluted at 1:100



Immunohistochemical analysis of paraffin-embedded human-brain, antibody was diluted at 1:100



Western blot analysis of lysate from Jurkat cells, using TUBA1A (Acetyl-Lys40) Antibody.