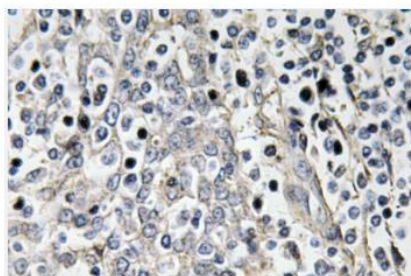


Laminin-R pAb

Catalog No.	IDS0176
Reactivity	Human; Mouse; Rat
Applications	WB; IHC-p; IF(paraffin section); ELISA
Alternative Names	40S ribosomal protein SA; 37 kDa laminin receptor precursor; 37/67 kDa laminin receptor; 67 kDa laminin receptor; Colon carcinoma laminin-binding protein; Laminin receptor 1; RPSA
Formulation	Liquid in PBS containing 50% glycerol, 0.5% BSA and 0.07% sodium azide.
Source	Rabbit
Dilution	WB:1:500-1:2000; IHC: 1:100-1:300; IF:1:50-1:200; ELISA: 1:40000
Purification	The antibody was affinity-purified from rabbit antiserum by affinity-chromatography using epitope-specific immunogen.
Concentration	1 mg/ml
Storage&Stability	Store at 4 °C short term. Aliquot and store at -20 °C long term. Avoid freeze-thaw cycles.
Subcellular Location	-
MW	~ 40 kDa
Background	Required for the assembly and/or stability of the 40S ribosomal subunit. Required for the processing of the 20S rRNA-precursor to mature 18S rRNA in a late step of the maturation of 40S ribosomal subunits. Also functions as a cell surface receptor for laminin. Plays a role in cell adhesion to the basement membrane and in the consequent activation of signaling transduction pathways. May play a role in cell fate determination and tissue morphogenesis. Acts as a PPP1R16B-dependent substrate of PPP1CA.
Swiss-Prot	P08865

Products Images:



Immunohistochemistry analysis of Laminin-R antibody in paraffin-embedded human tonsil tissue.

