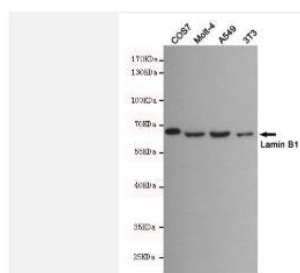


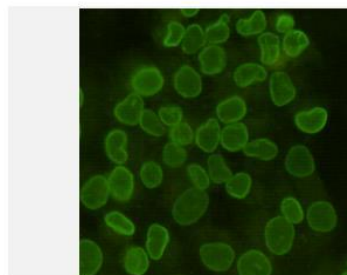
## Lamin B1 mAb

<b>Catalog No.</b>	IDS0162
<b>Reactivity</b>	Human; Mouse; Monkey
<b>Applications</b>	WB
<b>Alternative Names</b>	Lamin-B1; LMNB1
<b>Formulation</b>	Liquid in PBS containing 50% glycerol, 0.5% BSA and 0.07% sodium azide.
<b>Source</b>	Mouse
<b>Dilution</b>	WB: 1:500
<b>Purification</b>	The antibody was affinity-purified from mouse ascites by affinity-chromatography using specific immunogen.
<b>Concentration</b>	1 mg/ml
<b>Storage&amp;Stability</b>	Store at 4 °C short term. Aliquot and store at -20 °C long term. Avoid freeze-thaw cycles.
<b>Subcellular Location</b>	-
<b>MW</b>	~ 68 kDa
<b>Background</b>	This gene encodes one of the two B-type lamin proteins and is a component of the nuclear lamina. A duplication of this gene is associated with autosomal dominant adult-onset leukodystrophy (ADLD). Alternative splicing results in multiple transcript variants. [provided by RefSeq, Dec 2015].
<b>Swiss-Prot</b>	P20700

### Products Images:



Western blot detection of Lamin B1 in COS7, Molt-4, A549 and 3T3 cell lysates using Lamin B1 mouse mAb(dilution 1:500).Predicted band size:68kDa.Observed band size:68kDa.



Immunocytochemistry staining of HeLa cells fixed with 4% Paraformaldehyde and using anti-Lamin B1 mouse mAb (dilution 1:100).

