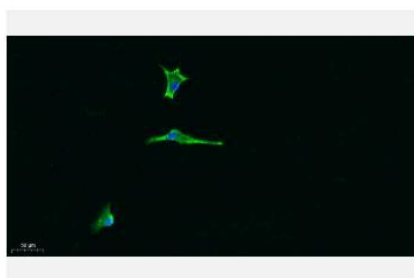


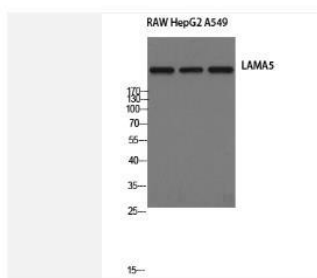
Laminin α -5 pAb

Catalog No.	IDS0141
Reactivity	Human; Mouse
Applications	WB; IHC-p; IF/ICC; ELISA
Alternative Names	Laminin subunit alpha-5; LAMA5
Formulation	Liquid in PBS containing 50% glycerol, 0.5% BSA and 0.07% sodium azide.
Source	Rabbit
Dilution	WB: 1:500-1:2000; IHC-p: 1:100-1:300; IF: 1:100-1:300; ELISA: 1:20000
Purification	The antibody was affinity-purified from rabbit antiserum by affinity-chromatography using epitope-specific immunogen.
Concentration	1 mg/ml
Storage&Stability	Store at 4 °C short term. Aliquot and store at -20 °C long term. Avoid freeze-thaw cycles.
Subcellular Location	-
MW	~ 64, 73 kDa
Background	This gene encodes one of the vertebrate laminin alpha chains. Laminins, a family of extracellular matrix glycoproteins, are the major noncollagenous constituent of basement membranes. They have been implicated in a wide variety of biological processes including cell adhesion, differentiation, migration, signaling, neurite outgrowth and metastasis. Laminins are composed of 3 non identical chains: laminin alpha, beta and gamma (formerly A, B1, and B2, respectively) and they form a cruciform structure consisting of 3 short arms, each formed by a different chain, and a long arm composed of all 3 chains. Each laminin chain is a multidomain protein encoded by a distinct gene. The protein encoded by this gene is the alpha-5 subunit of of laminin-10 (laminin-511), laminin-11 (laminin-521) and laminin-15 (laminin-523). [provided by RefSeq, Jun 2013].
Swiss-Prot	O15230

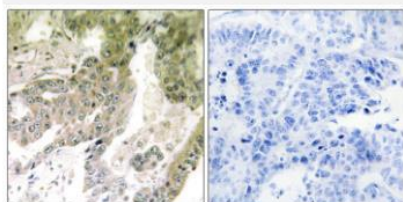
Products Images:



Immunofluorescence analysis of A549. 1,primary Antibody was diluted at 1:200(4°C overnight). 2, Goat Anti Rabbit IgG (H&L) - Alexa Fluor 488 Secondary antibody was diluted at 1:1000(room temperature, 50min).3, Picture B: DAPI(blue) 10min.



Western Blot analysis of RAW HepG2 A549 cells using Laminin α -5 Polyclonal Antibody



Immunohistochemistry analysis of paraffin-embedded human lung carcinoma tissue, using LAMA5 Antibody. The picture on the right is blocked with the synthesized peptide.