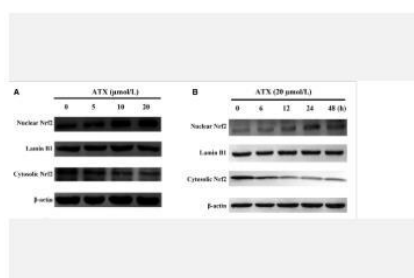


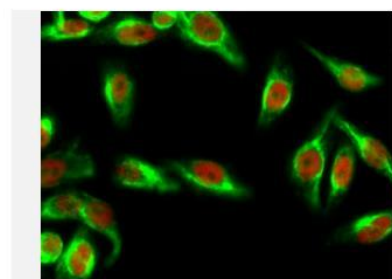
## Lamin B1 mAb (7C11)

<b>Catalog No.</b>	IDS0138
<b>Reactivity</b>	Human; Mouse; Rat
<b>Applications</b>	WB; IP; IHC-p; IF/ICC
<b>Alternative Names</b>	Lamin-B1; LMNB1
<b>Formulation</b>	Liquid in PBS containing 50% glycerol, 0.5% BSA and 0.07% sodium azide.
<b>Source</b>	Mouse
<b>Dilution</b>	WB: 1:2000-1:5000; IP:1:50; IHC: 1:50-1:300; IF: 1:200
<b>Purification</b>	The antibody was affinity-purified from mouse ascites by affinity-chromatography using specific immunogen.
<b>Concentration</b>	1 mg/ml
<b>Storage&amp;Stability</b>	Store at 4 °C short term. Aliquot and store at -20 °C long term. Avoid freeze-thaw cycles.
<b>Subcellular Location</b>	-
<b>MW</b>	~ 68 kDa
<b>Background</b>	This gene encodes one of the two B-type lamin proteins and is a component of the nuclear lamina. A duplication of this gene is associated with autosomal dominant adult-onset leukodystrophy (ADLD). Alternative splicing results in multiple transcript variants. [provided by RefSeq, Dec 2015].
<b>Swiss-Prot</b>	P20700

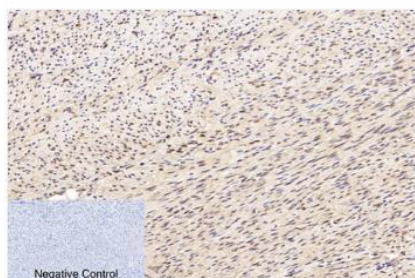
### Products Images:



Zhang, Jie, et al. "Neuroprotective effects of astaxanthin against oxygen and glucose deprivation damage via the PI3K/Akt/GSK3 $\beta$ /Nrf2 signalling pathway in vitro." *Journal of Cellular and Molecular Medicine* 24.16 (2020): 8977-8985.



Immunofluorescence analysis of HeLa cell. 1, AMPK $\alpha$ 1/2 (phospho Thr183/172) Polyclonal Antibody (green) was diluted at 1:200 (4° overnight). (red) was diluted at 1:200 (4° overnight). 2, Goat Anti Rabbit Alexa Fluor 488 Catalog: RS3211 was diluted at 1:1000 (room temperature, 50min). Goat Anti Mouse Alexa Fluor 594 Catalog: RS3608 was diluted at 1:1000 (room temperature, 50min).



Immunohistochemical analysis of paraffin-embedded Human-uterus tissue. 1, Lamin B1 Monoclonal Antibody (7C11) was diluted at 1:200 (4°C, overnight). 2, Sodium citrate pH 6.0 was used for antibody retrieval (>98°C, 20min). 3, Secondary antibody was diluted at 1:200 (room temperature, 30min). Negative control was used by secondary antibody only.



1) Input: Mouse Brain Tissue Lysate 2) IP product: IP dilute 1:200