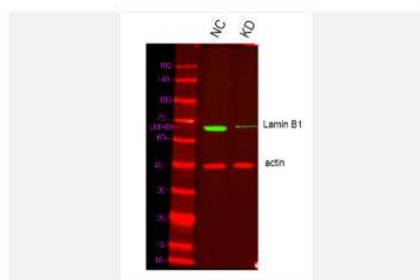


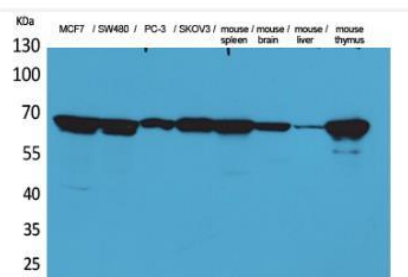
## Lamin B1 pAb

<b>Catalog No.</b>	IDS0137
<b>Reactivity</b>	Human; Mouse; Rat
<b>Applications</b>	WB; IHC-p; IF(paraffin section); ELISA
<b>Alternative Names</b>	Lamin-B1; LMNB1
<b>Formulation</b>	Liquid in PBS containing 50% glycerol, 0.5% BSA and 0.07% sodium azide.
<b>Source</b>	Rabbit
<b>Dilution</b>	WB: 1:500-1:2000; IHC-p: 1:100-300; IF: 1:50-1:200; ELISA: 1:20000
<b>Purification</b>	The antibody was affinity-purified from rabbit antiserum by affinity-chromatography using epitope-specific immunogen.
<b>Concentration</b>	1 mg/ml
<b>Storage&amp;Stability</b>	Store at 4 °C short term. Aliquot and store at -20 °C long term. Avoid freeze-thaw cycles.
<b>Subcellular Location</b>	-
<b>MW</b>	~ 70 kDa
<b>Background</b>	This gene encodes one of the two B-type lamin proteins and is a component of the nuclear lamina. A duplication of this gene is associated with autosomal dominant adult-onset leukodystrophy (ADLD). Alternative splicing results in multiple transcript variants. [provided by RefSeq, Dec 2015].
<b>Swiss-Prot</b>	P20700

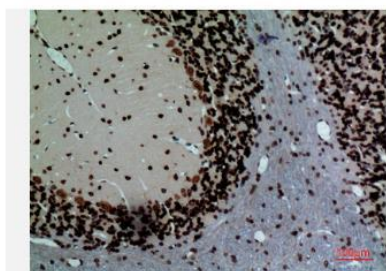
### Products Images:



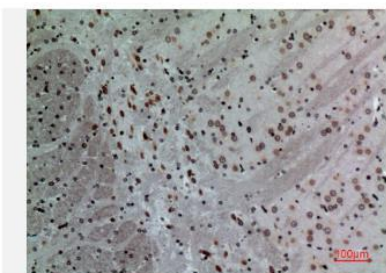
Western blot analysis of lysates from 1)HeLa cell , 2)HeLa cells knockdown by siRNA  
(F:GCUUCUUGAUGUAAAGUUATT;R:UAACUUUACAUCAGAAGCTT),  
(Green) primary antibody was diluted at 1:1000, 4° over night,  
Dylight 800 secondary antibody(Immunoway:RS23920)was  
diluted at 1:10000, 37° 1hour. (Red) actin Monoclonal  
Antibody (Immunoway:YM3028) antibody was diluted at  
1:5000 as loading control, 4° over night, Dylight 680  
secondary antibody(Immunoway:RS23710)was diluted at  
1:10000, 37° 1hour.



Western Blot analysis of MCF7, SW480, PC-3, SKOV3, mouse spleen, mouse brain, mouse liver, mouse thymus cells using Lamin B1 Polyclonal Antibody. Antibody was diluted at 1:500. Secondary antibody(catalog#:RS0002) was diluted at 1:20000 cells nucleus extracted by Minute TM Cytoplasmic and Nuclear Fractionation kit (SC-003, Inventbiotech, MN, USA).



Immunohistochemical analysis of paraffin-embedded rat-brain, antibody was diluted at 1:100



Immunohistochemical analysis of paraffin-embedded mouse-brain, antibody was diluted at 1:100