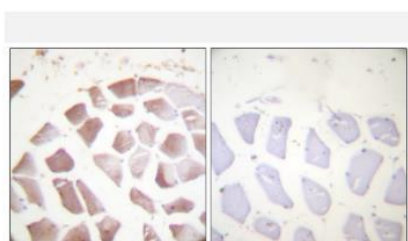


Actin- α/γ (phospho Tyr55/53) pAb

Catalog No.	IDS0074
Reactivity	Human; Mouse; Rat
Applications	IHC-p; IF(paraffin section); ELISA
Alternative Names	Actin; alpha cardiac muscle 1; Alpha-cardiac actin; ACTC1
Formulation	Liquid in PBS containing 50% glycerol, 0.5% BSA and 0.07% sodium azide.
Source	Rabbit
Dilution	IHC: 1:100-1:300; IF: 1:50-1:200; ELISA: 1:5000
Purification	The antibody was affinity-purified from rabbit antiserum by affinity-chromatography using epitope-specific immunogen.
Concentration	1 mg/ml
Storage&Stability	Store at 4 °C short term. Aliquot and store at -20 °C long term. Avoid freeze-thaw cycles.
Subcellular Location	-
MW	N/A
Background	Actins are highly conserved proteins that are involved in various types of cell motility. Polymerization of globular actin (G-actin) leads to a structural filament (F-actin) in the form of a two-stranded helix. Each actin can bind to four others. The protein encoded by this gene belongs to the actin family which is comprised of three main groups of actin isoforms, alpha, beta, and gamma. The alpha actins are found in muscle tissues and are a major constituent of the contractile apparatus. Defects in this gene have been associated with idiopathic dilated cardiomyopathy (IDC) and familial hypertrophic cardiomyopathy (FHC). [provided by RefSeq, Jul 2008].
Swiss-Prot	P68032/P63261/P63267/P68133

Products Images:



Immunohistochemistry analysis of paraffin-embedded human skeletal muscle, using Actin-pan (alpha/gamma) (Phospho-Tyr55/53) Antibody. The picture on the right is blocked with the phospho peptide.