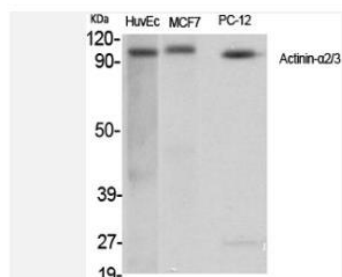


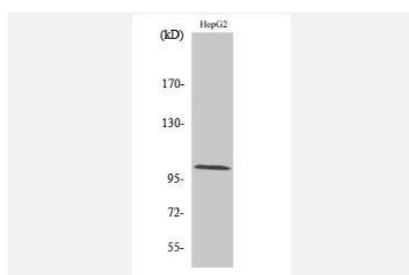
Actinin- α 2/3 pAb

Catalog No.	IDS0067
Reactivity	Human; Mouse; Rat
Applications	WB; IHC-p; IF/ICC; ELISA
Alternative Names	Alpha-actinin-2; Alpha-actinin skeletal muscle isoform 2 F-actin cross-linking protein; ACTN2
Formulation	Liquid in PBS containing 50% glycerol, 0.5% BSA and 0.07% sodium azide.
Source	Rabbit
Dilution	WB:1:500-1:2000; IHC: 1:100-1:300; IF: 1:200-1:1000; ELISA: 1:20000
Purification	The antibody was affinity-purified from rabbit antiserum by affinity-chromatography using epitope-specific immunogen.
Concentration	1 mg/ml
Storage&Stability	Store at 4 °C short term. Aliquot and store at -20 °C long term. Avoid freeze-thaw cycles.
Subcellular Location	-
MW	~ 103 kDa
Background	Alpha actinins belong to the spectrin gene superfamily which represents a diverse group of cytoskeletal proteins, including the alpha and beta spectrins and dystrophins. Alpha actinin is an actin-binding protein with multiple roles in different cell types. In nonmuscle cells, the cytoskeletal isoform is found along microfilament bundles and adherens-type junctions, where it is involved in binding actin to the membrane. In contrast, skeletal, cardiac, and smooth muscle isoforms are localized to the Z-disc and analogous dense bodies, where they help anchor the myofibrillar actin filaments. This gene encodes a muscle-specific, alpha actinin isoform that is expressed in both skeletal and cardiac muscles. Several transcript variants encoding different isoforms have been found for this gene. [provided by RefSeq, May 2013].
Swiss-Prot	P35609/Q08043

Products Images:



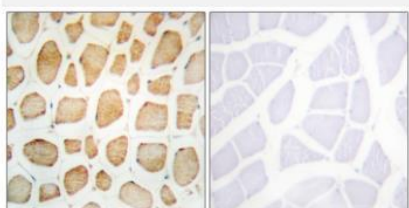
Western Blot analysis of various cells using Actinin- α 2/3 Polyclonal Antibody



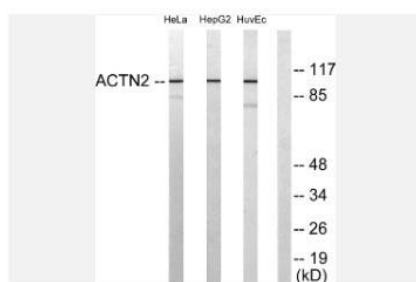
Western Blot analysis of HepG2 cells using Actinin- α 2/3 Polyclonal Antibody



Immunofluorescence analysis of HeLa cells, using Actinin alpha-2/3 Antibody. The picture on the right is blocked with the synthesized peptide.



Immunohistochemistry analysis of paraffin-embedded human skeletal muscle tissue, using Actinin alpha-2/3 Antibody. The picture on the right is blocked with the synthesized peptide.



Western blot analysis of lysates from HepG2, HeLa, and HUVEC cells, using Actinin alpha-2/3 Antibody. The lane on the right is blocked with the synthesized peptide.