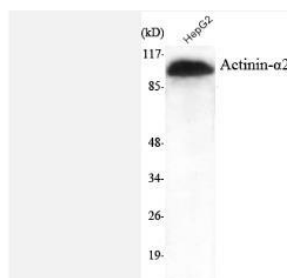


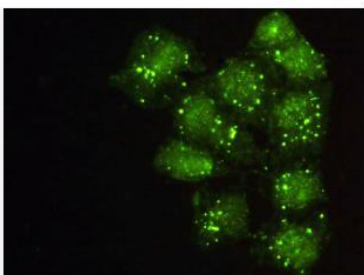
Actinin- α 2 mAb

| | |
|------------------------------|--|
| Catalog No. | IDS0066 |
| Reactivity | Human; Rat; Bovine; Chicken; Dog; Pig; Zebrafish |
| Applications | WB; IF/ICC |
| Alternative Names | Alpha-actinin-2; Alpha-actinin skeletal muscle isoform 2 F-actin cross-linking protein; ACTN2 |
| Formulation | Liquid in PBS containing 50% glycerol, 0.5% BSA and 0.07% sodium azide. |
| Source | Mouse |
| Dilution | WB: 1:1000-1:2000; IF: 1:100-1:500 |
| Purification | The antibody was affinity-purified from mouse ascites by affinity-chromatography using specific immunogen. |
| Concentration | 1 mg/ml |
| Storage&Stability | Store at 4 °C short term. Aliquot and store at -20 °C long term. Avoid freeze-thaw cycles. |
| Subcellular Location | - |
| MW | ~ 104 kDa |
| Background | Alpha actinins belong to the spectrin gene superfamily which represents a diverse group of cytoskeletal proteins, including the alpha and beta spectrins and dystrophins. Alpha actinin is an actin-binding protein with multiple roles in different cell types. In nonmuscle cells, the cytoskeletal isoform is found along microfilament bundles and adherens-type junctions, where it is involved in binding actin to the membrane. In contrast, skeletal, cardiac, and smooth muscle isoforms are localized to the Z-disc and analogous dense bodies, where they help anchor the myofibrillar actin filaments. This gene encodes a muscle-specific, alpha actinin isoform that is expressed in both skeletal and cardiac muscles. Several transcript variants encoding different isoforms have been found for this gene. [provided by RefSeq, May 2013]. |
| Swiss-Prot | P35609 |

Products Images:



Western Blot analysis using Actinin- α 2 Monoclonal Antibody against HepG2 cell lysate.



Immunofluorescence analysis of HeLa cells using Actinin-α2
Monoclonal Antibody.