

## V5-tag polyclonal antibody

**Catalog No.:** BJ1003

**Host:** Rabbit

**Reactivity:** All

### BackGround:

Epitope tags are useful for the labeling and detection of proteins using immunoblotting, immunoprecipitation and immunostaining techniques. Due to their small size, they are unlikely to affect the tagged protein's biochemical properties.

### Product:

Rabbit IgG, 1mg/ml in PBS with 0.02% sodium azide, 50% glycerol, pH7.2

### Molecular Weight:

### Swiss-Prot:

### Purification&Purity:

The antibody was affinity-purified from rabbit antiserum by affinity-chromatography using epitope-specific immunogen and the purity is > 95% (by SDS-PAGE)

### Applications:

WB: 1:2000~1:20000

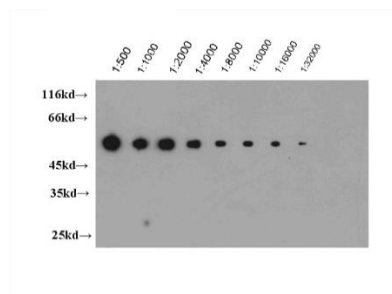
### Storage&Stability:

Store at 4°C short term. Aliquot and store at -20°C long term. Avoid freeze-thaw cycles.

### Specificity:

V5-tag polyclonal antibody detects over-expressed or recombinant proteins containing the V5 epitope tag

### DATA:



Recombinant protein were subjected to SDS PAGE followed by western blot with BJ1003 (V5-tag antibody) at dilution of 1:32000 incubated at room temperature for 1.5 hours.

### Note:

For research use only, not for use in diagnostic procedure.