

Flag -tag polyclonal antibody

Catalog No.: BJ1002

Host: Rabbit

Reactivity: Human, Mouse, Rat

BackGround:

Protein tags are protein or peptide sequences located either on the C- or N-terminal of the target protein, which facilitates one or several of the following characteristics: solubility, detection, purification, localization and expression. The DYKDDDDK(FLAG) peptide has been used extensively as a general tag in expression vectors. This peptide can be expressed and detected with the protein of interest as an amino-terminal or carboxy-terminal fusion. N-terminal DDDDK vectors provide an Ek cleavage site for removal of the fusion tag. The DDDDK peptide is likely to be located on the surface of a fusion protein because of its hydrophilic nature. As a result, the DDDDK peptide is more likely to be accessible to antibodies. A DDDDK-tag can be used in many different assays that require recognition by an antibody, such as western blotting, immunocytochemistry, immunoprecipitation, flow cytometry, protein purification, and in the study of protein-protein interactions, cell ultrastructure, and protein localization and so on. This antibody is a rabbit polyclonal antibody raised against 3xFlag (3xDYKDDDDKT) sequence and recognizes the (1x) and (3x)DYKDDDDK peptide and detects DDDDK-tagged proteins. Anti-FLAG is a registered trademark of Sigma-Aldrich Biotechnology, recognized by enzymes such as thrombin or enterokinase, permitting the separation of the target protein from the polyhistidine tag.

Product:

Rabbit IgG, 1mg/ml in PBS with 0.02% sodium azide, 50% glycerol, pH7.2

Molecular Weight:

N/A

Swiss-Prot:

N/A

Purification&Purity:

The antibody was affinity-purified from rabbit antiserum by affinity-chromatography using epitope-specific immunogen and the purity is > 95% (by SDS-PAGE)

Applications:

WB: 1:1000~1:4000

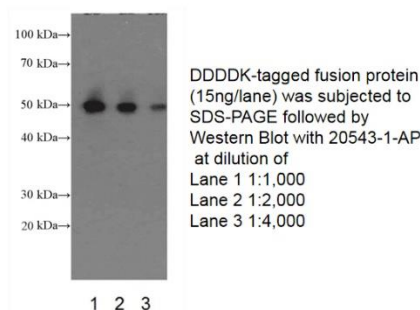
Storage&Stability:

Store at 4°C short term. Aliquot and store at -20°C long term. Avoid freeze-thaw cycles.

Specificity:

DDDDK-tag polyclonal antibody detects over-expressed or recombinant proteins containing the DDDDK epitope tag.

DATA:



Western blot of DDDDK-tagged fusion protein with BJ1002 (DDDDK tag antibody) at various dilutions.

Note:

For research use only, not for use in diagnostic procedure.