

Tubulin β polyclonal antibody

Catalog No.: BJ0004

Host: Rabbit

Reactivity: Human, Mouse, Rat

BackGround:

Microtubules are constituent parts of the mitotic apparatus, cilia, flagella, and elements of the cytoskeleton. They consist principally of 2 soluble proteins, alpha- and beta-tubulin, each of about 55,000 kDa. Antibodies against beta Tubulin are useful as loading controls for Western Blotting. However it should be noted that levels of beta Tubulin may not be stable in certain cells.

Product:

Rabbit IgG, 1mg/ml in PBS with 0.02% sodium azide, 50% glycerol, pH7.2

Molecular Weight:

~ 55 kDa

Swiss-Prot:

N/A

Purification&Purity:

The antibody was affinity-purified from rabbit antiserum by affinity-chromatography using epitope-specific immunogen and the purity is > 95% (by SDS-PAGE)

Applications:

WB: 1:5000~20000

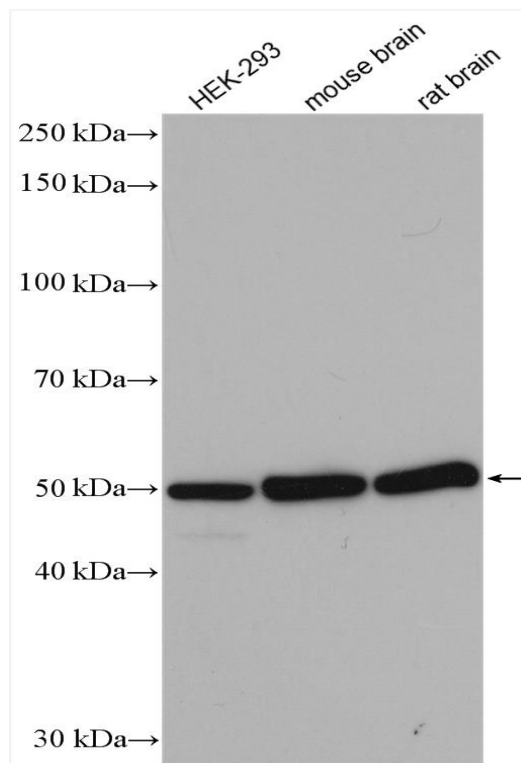
Storage&Stability:

Store at 4°C short term. Aliquot and store at -20°C long term. Avoid freeze-thaw cycles.

Specificity:

Tubulin beta 1/2/3/5/6/8 polyclonal antibody pAb detects endogenous levels of Tubulin beta 1/2/3/5/6/8 protein.

DATA:



Western blot (WB) analysis of Tubulin α pAb at 1: 5000—1: 20000

Note:

For research use only, not for use in diagnostic procedure.